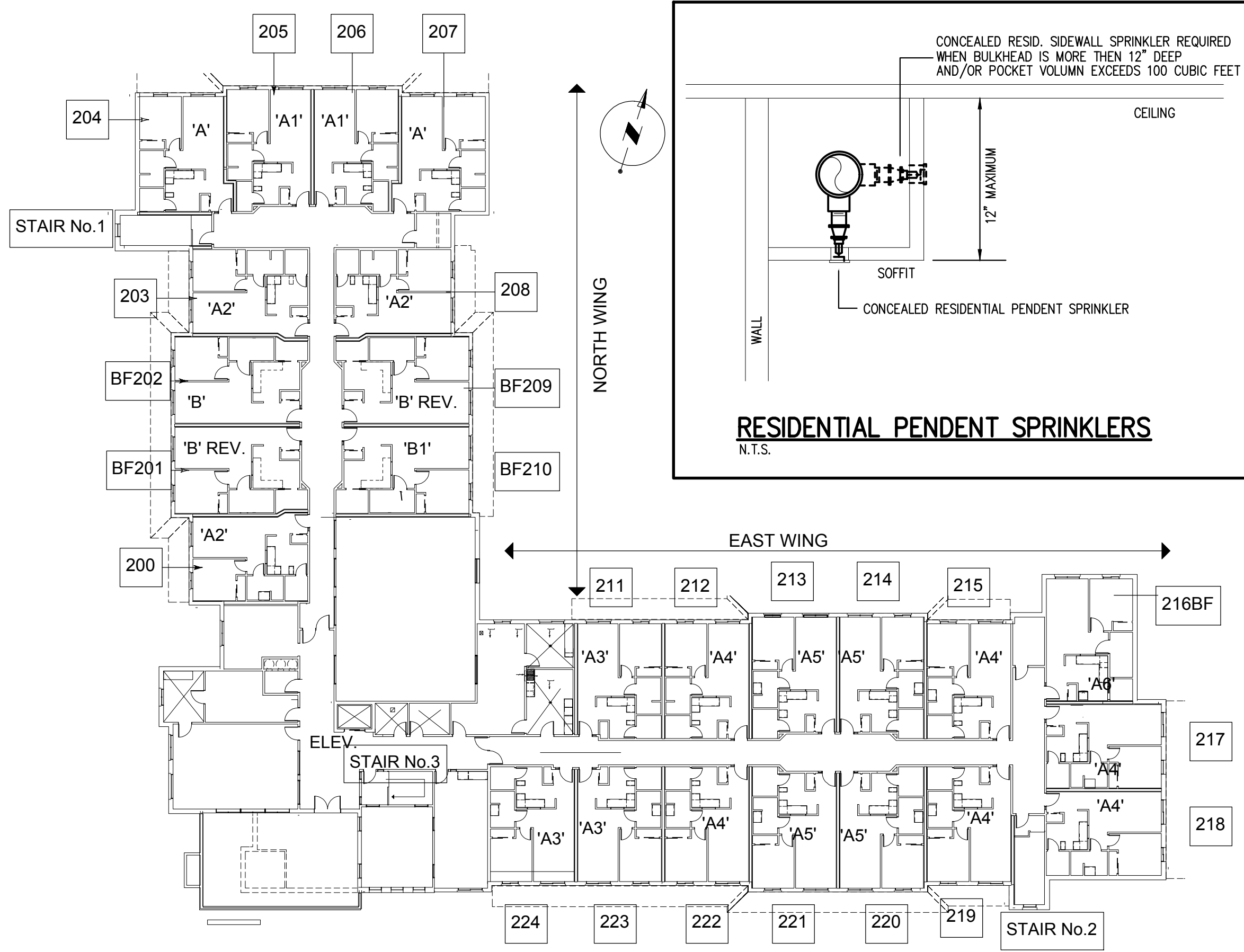
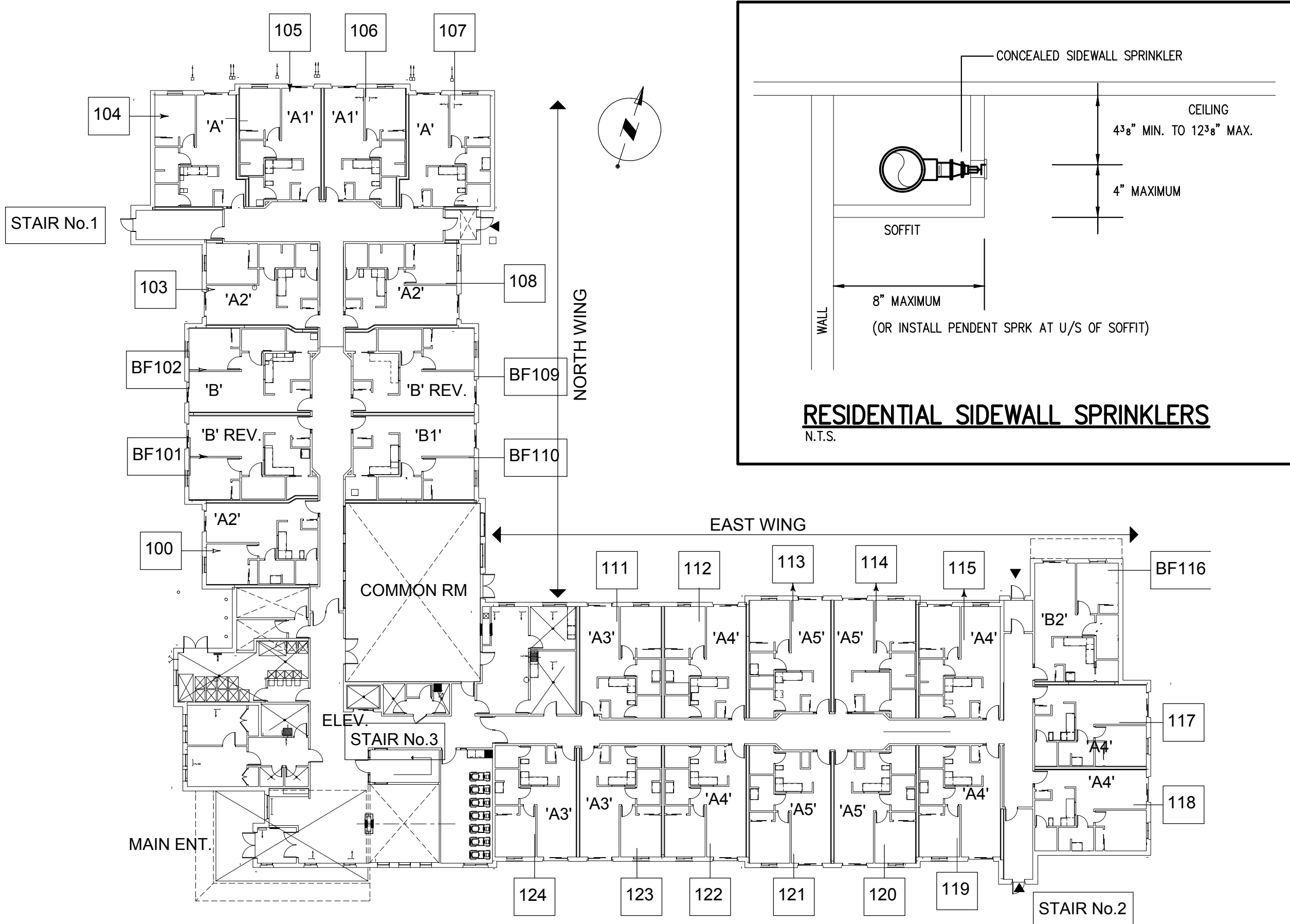


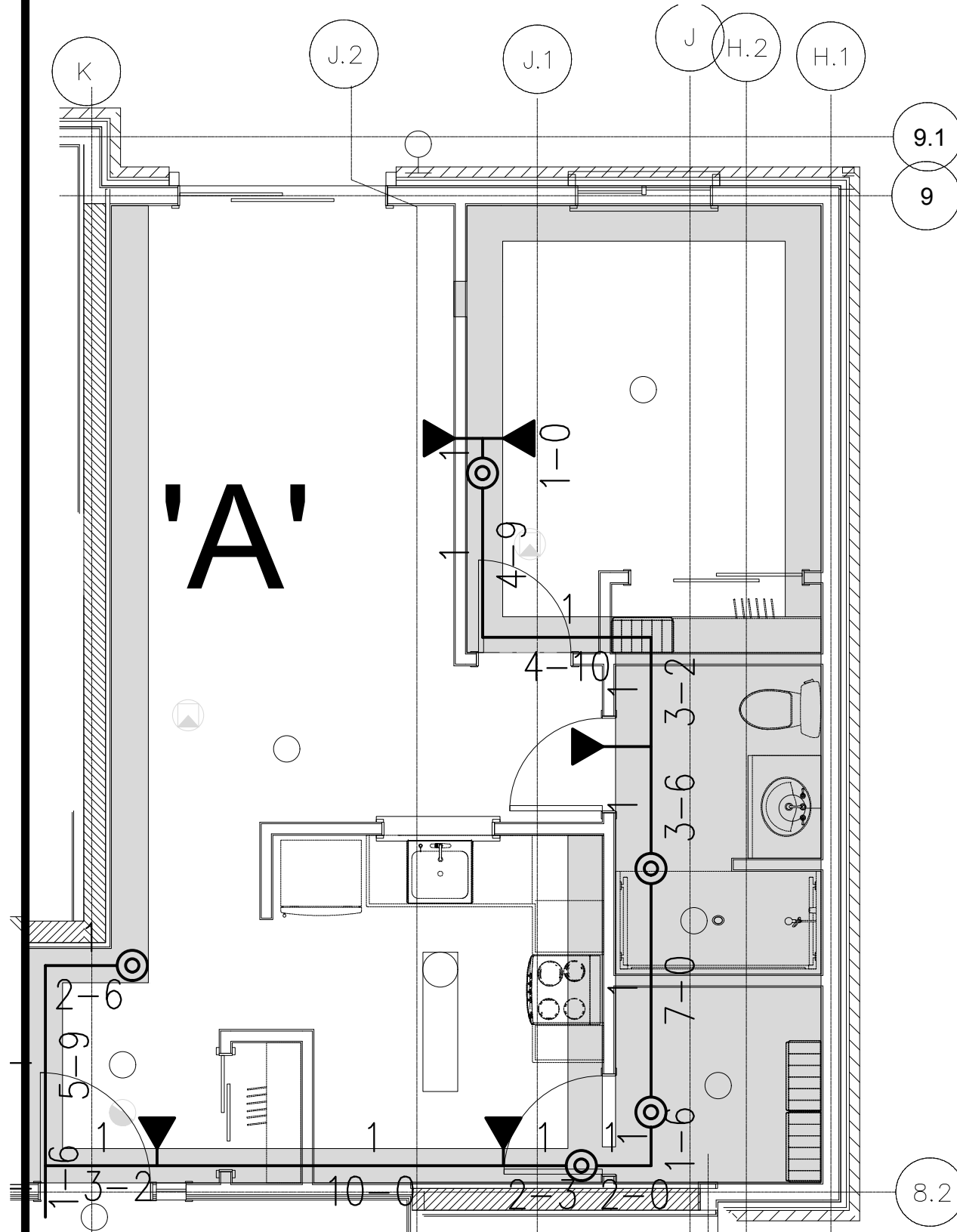
- NOTES:
1. — DENOTES TYPICAL PIPE HANGER LOCATION
 2. ○ DENOTES DISTANCE FROM U/S OF METAL DECK TO CENTRE LINE OF PIPE
 3. ○ DENOTES 1/2" 155°F STANDARD RESPONSE K=5.6 BRASS UPRIGHT SPRINKLER
 - ⊗ DENOTES VIKING 1/2" 155°F K=5.6 QUICK RESPONSE BRASS UPRIGHT SPRINKLER
 - ▽ DENOTES 1/2" 155°F STANDARD RESPONSE K=5.6 BRASS SIDEWALL SPRINKLER
 - ✱ DENOTES VIKING MIRAGE MODEL VK463 1/2" 155°F K=5.6 QUICK RESPONSE CONCEALED PENDENT SPRINKLER C/W WHITE FLAT PLATE
 - DENOTES VIKING MODEL VK494 1/2" 155°F K=4.9 FREEDOM RESIDENTIAL CONCEALED PENDENT SPRINKLER C/W WHITE FLAT PLATE
 - ⊙ DENOTES VIKING MIRAGE MODEL VK481 1/2" 165°F K=5.6 QUICK RESPONSE CONCEALED HORIZONTAL SIDEWALL SPRINKLER C/W WHITE FLAT PLATE (SPRINKLER DEFLECTOR TO CEILING - MIN. 4 3/8" AND MAX. 12 3/4")
 - ▽ DENOTES VIKING MODEL VK480 1/2" 155°F K=4.0 FREEDOM RESIDENTIAL CONCEALED HORIZONTAL SIDEWALL SPRINKLER C/W WHITE FLAT PLATE (SPRINKLER DEFLECTOR TO CEILING - MIN. 6 3/8" AND MAX. 12 3/4")
 - HT ✱ DENOTES VIKING MIRAGE MODEL VK462 1/2" 286°F K=5.6 STANDARD RESPONSE CONCEALED PENDENT SPRINKLER C/W WHITE FLAT PLATE (ONLY @ KITCHEN ROOM)
 - HT ⊗ DENOTES VIKING 1/2" 286°F K=5.6 STANDARD RESPONSE BRASS UPRIGHT SPRINKLER
 - ⊙ DENOTES VIKING MODEL VK481 1/2" 165°F K=5.6 CONCEALED HORIZONTAL SIDEWALL SPRINKLER C/W WHITE FLAT PLATE (SPRINKLER DEFLECTOR TO CEILING - MIN. 4 3/8" AND MAX. 12 3/4")
 - FE ⊗ DENOTES 5 LB ABC MULTI-PURPOSE FIRE EXTINGUISHER C/W CABINET
 - CO2-FE ⊗ DENOTES 5 LB CO2 FIRE EXTINGUISHER C/W CABINET



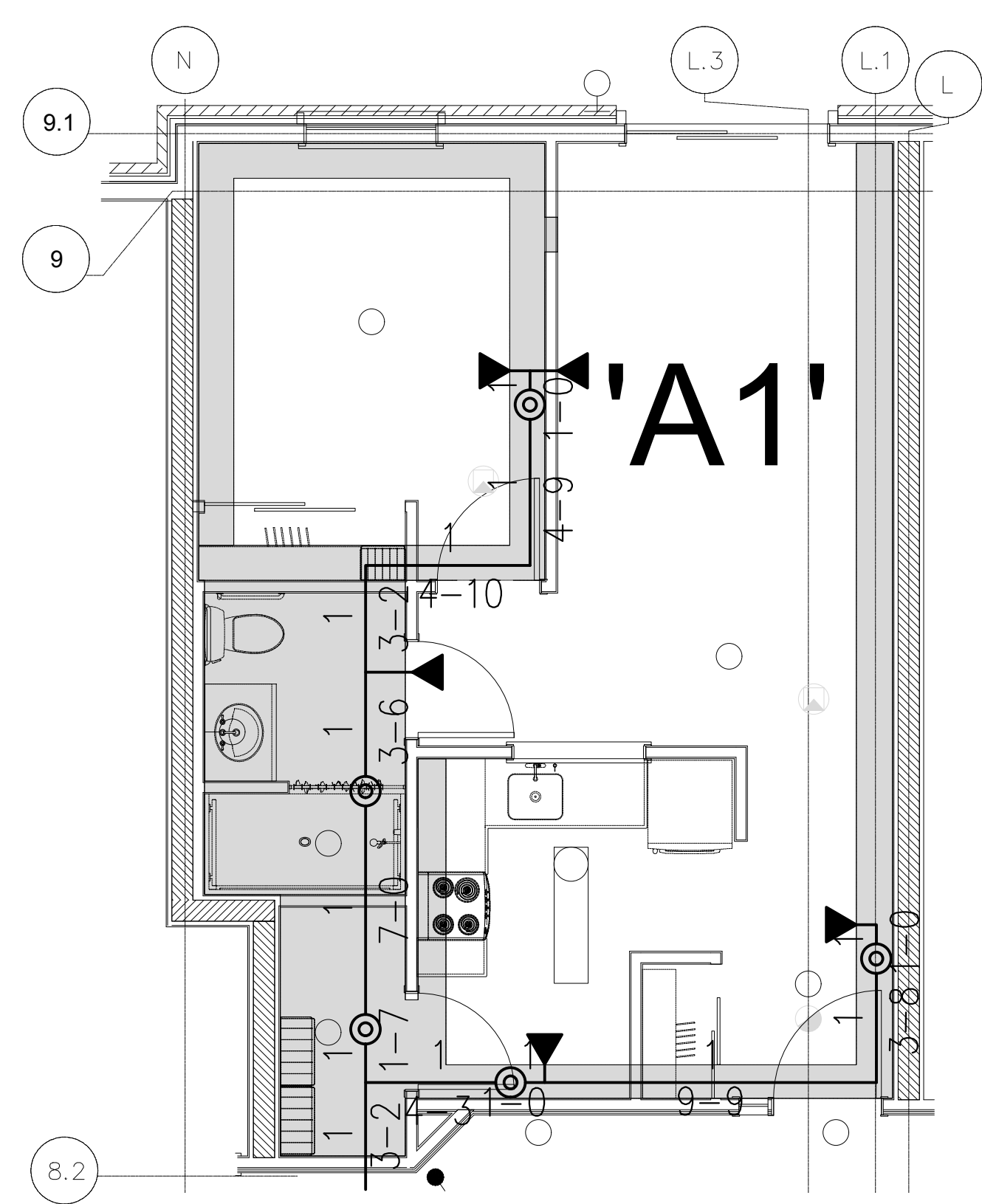
SOUND FLOOR SUITE TYPE KEY PLAN
SCALE: 1:300



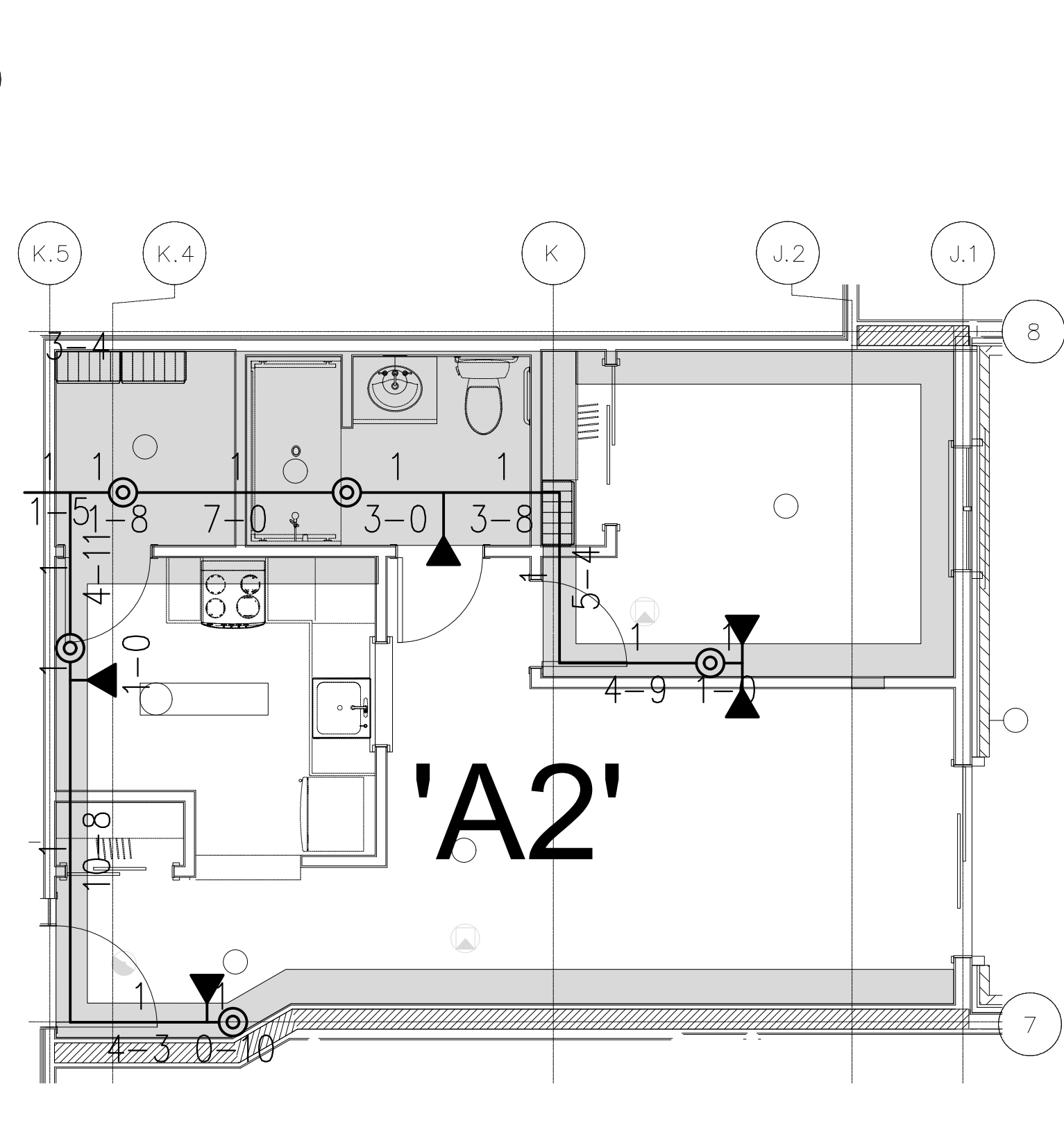
GROUND FLOOR SUITE TYPE KEY PLAN
SCALE: 1:300



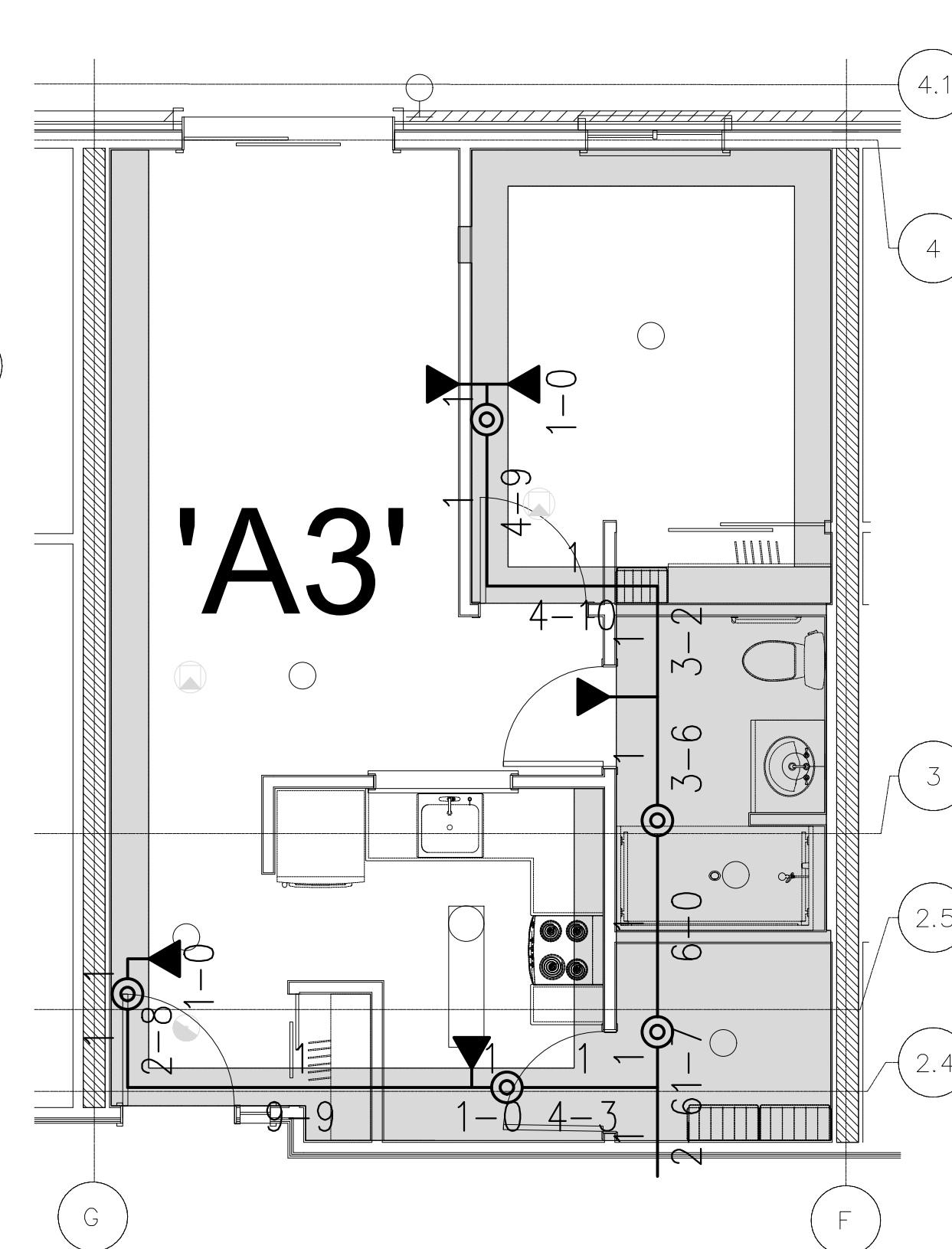
SUITE TYPE 'A'
SCALE: 1:50



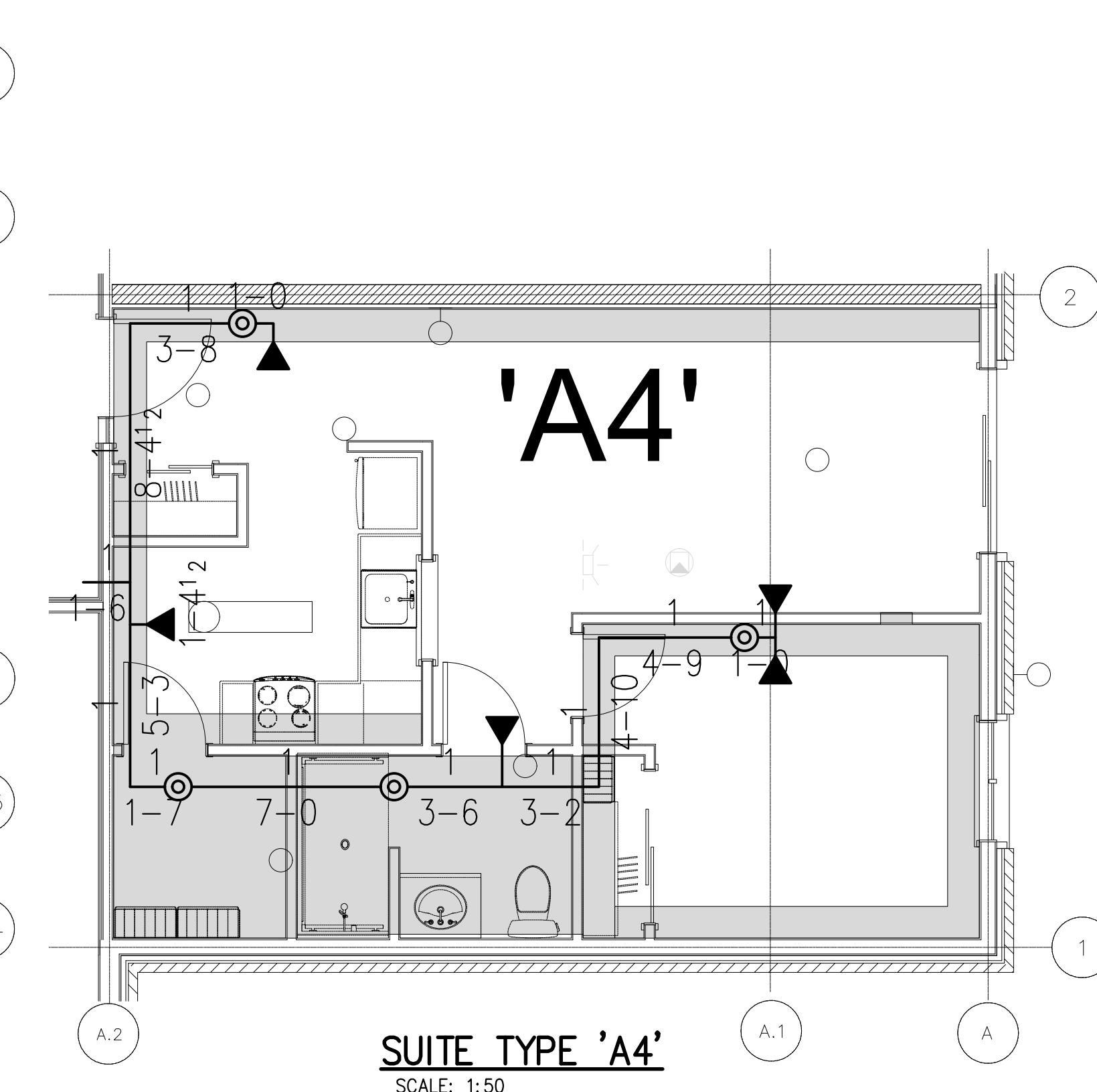
SUITE TYPE 'A1'
SCALE: 1:50



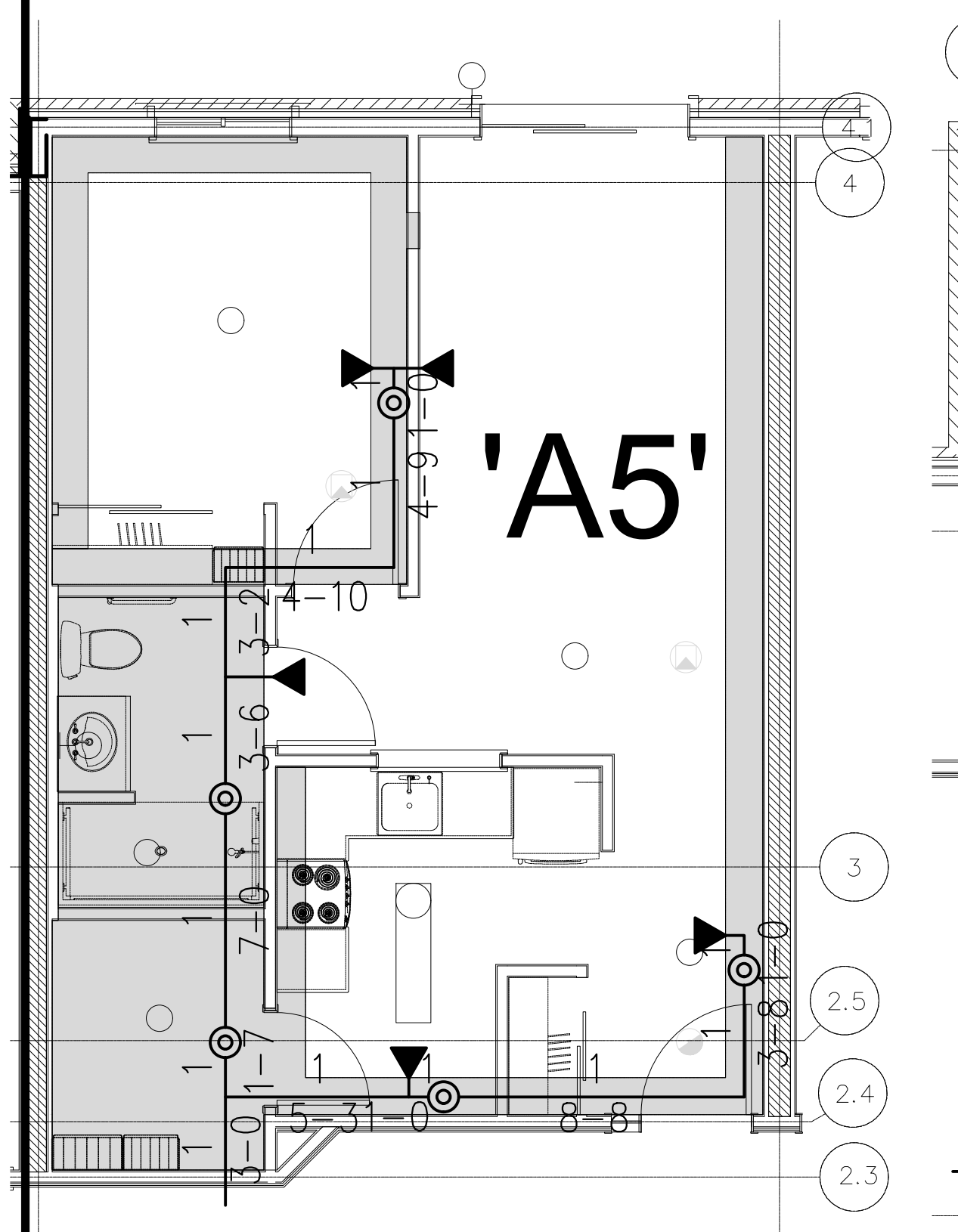
SUITE TYPE 'A2'
SCALE: 1:50



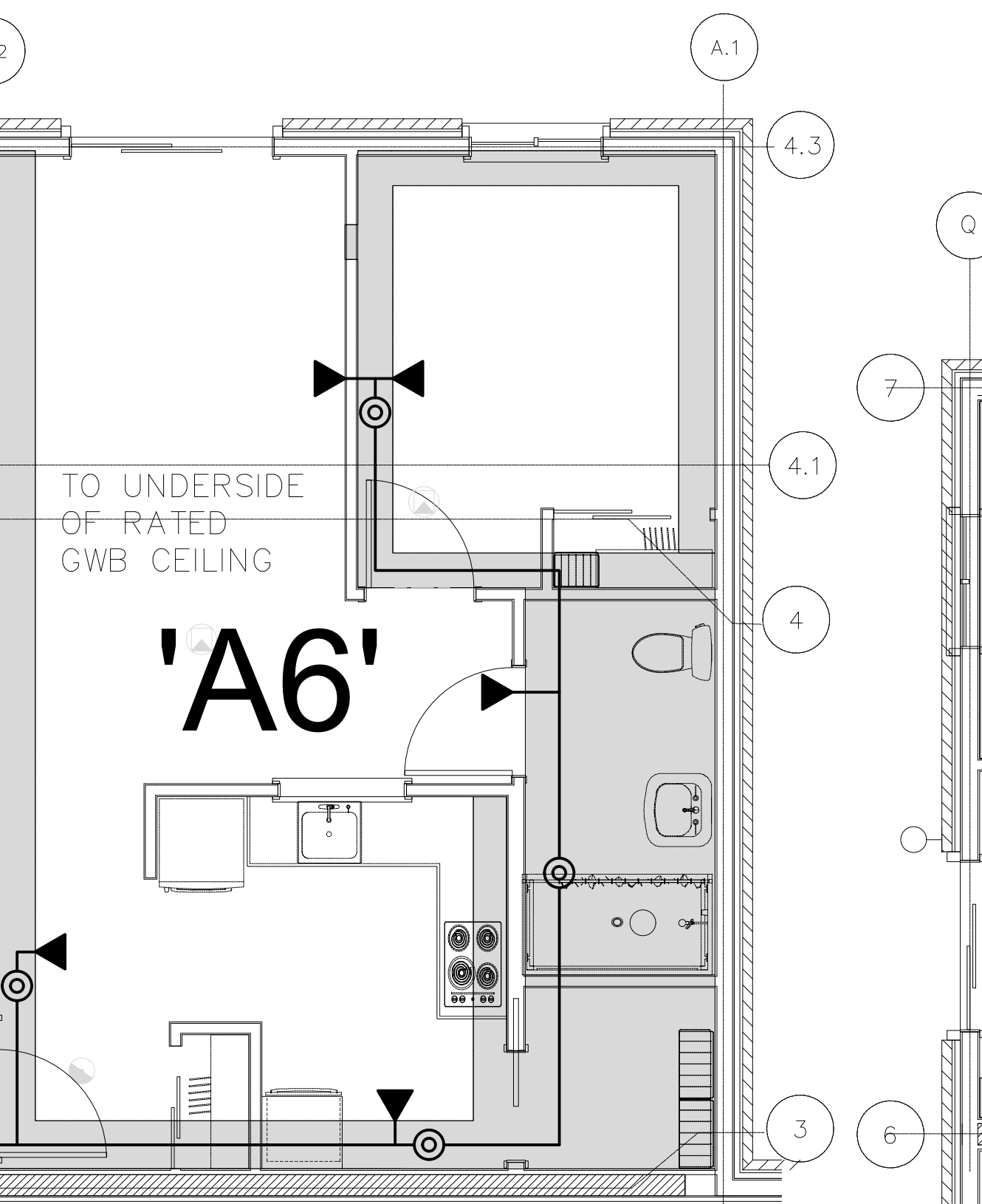
SUITE TYPE 'A3'
SCALE: 1:50



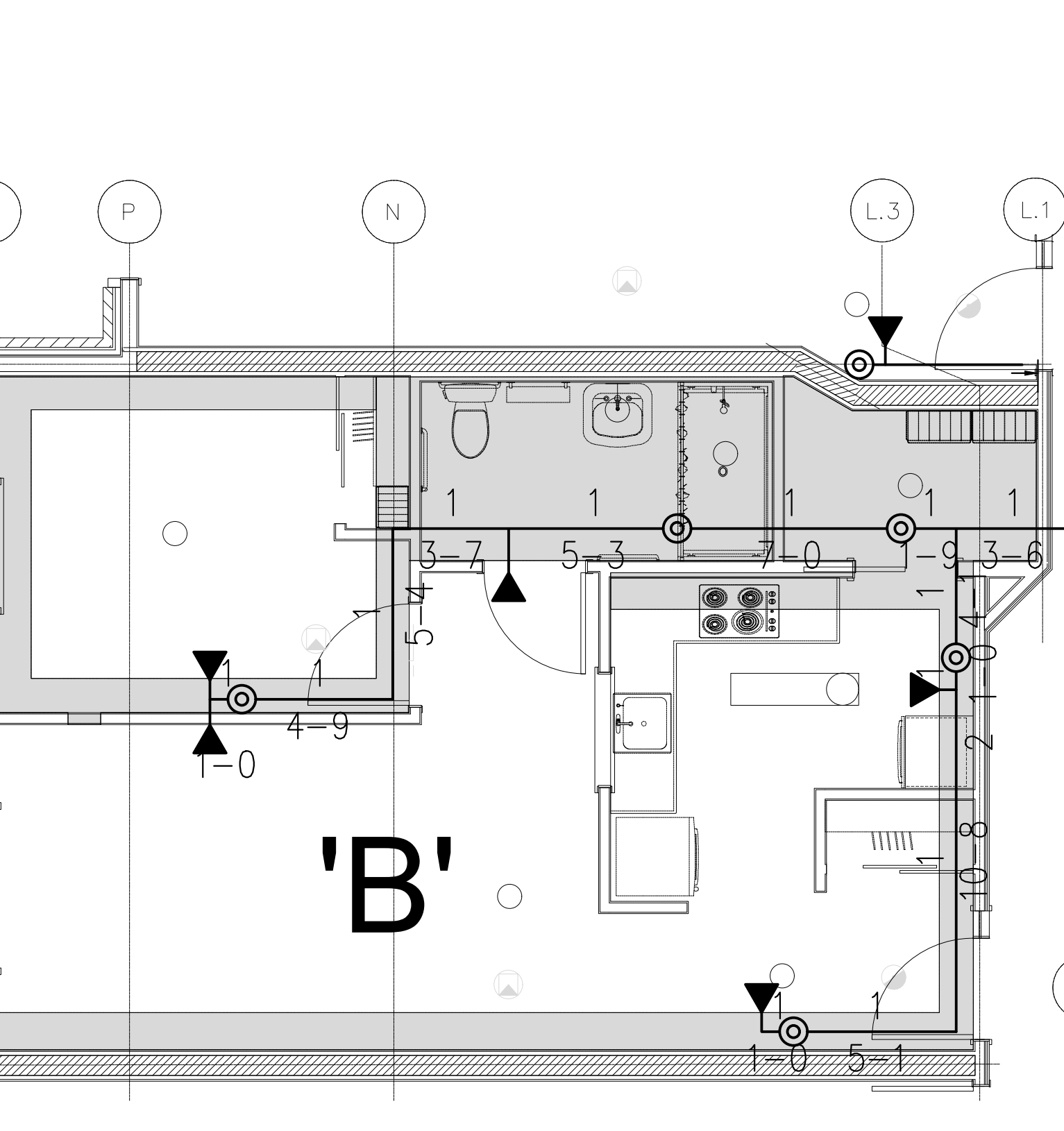
SUITE TYPE 'A4'
SCALE: 1:50



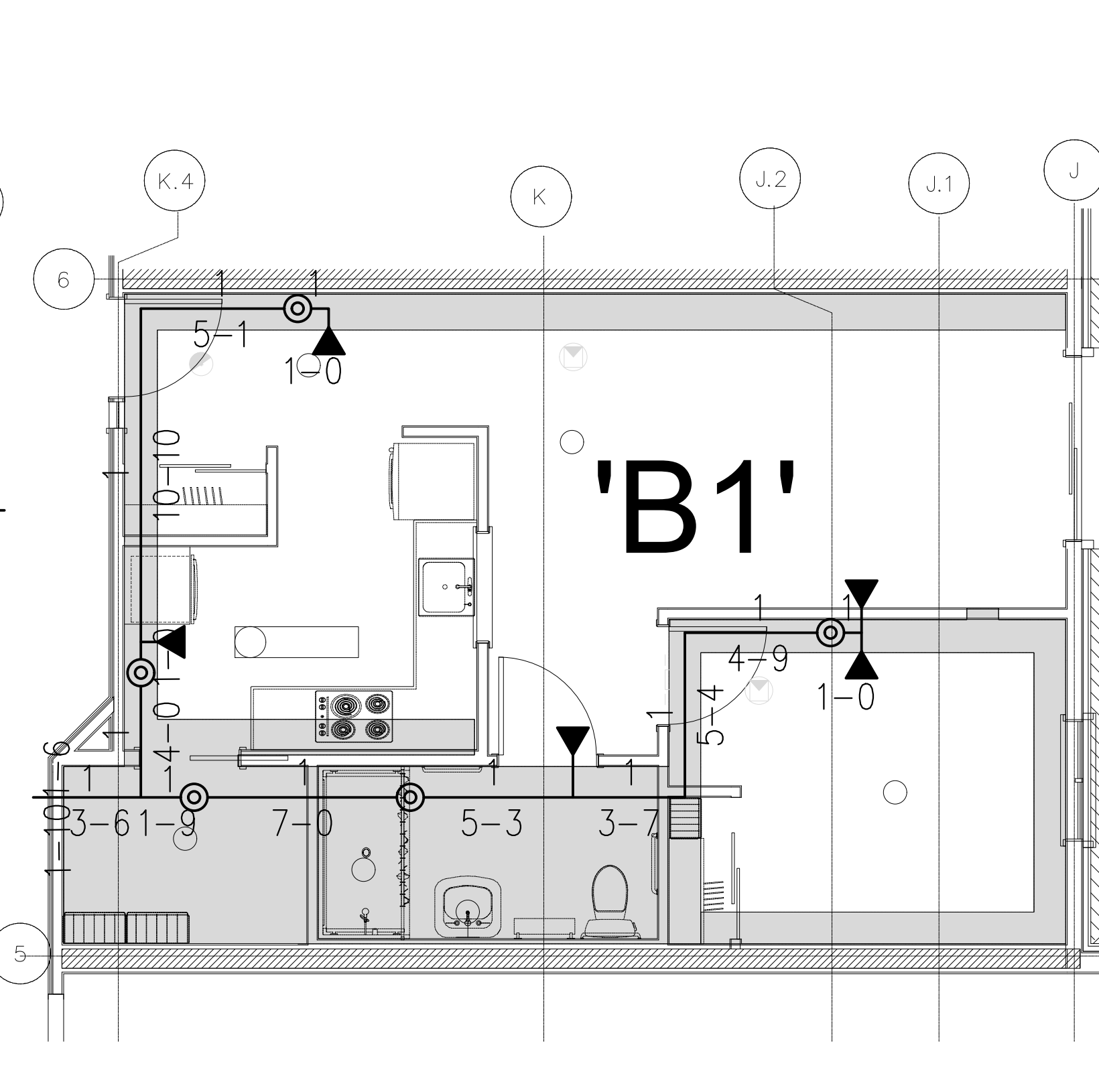
SUITE TYPE 'A5'
SCALE: 1:50



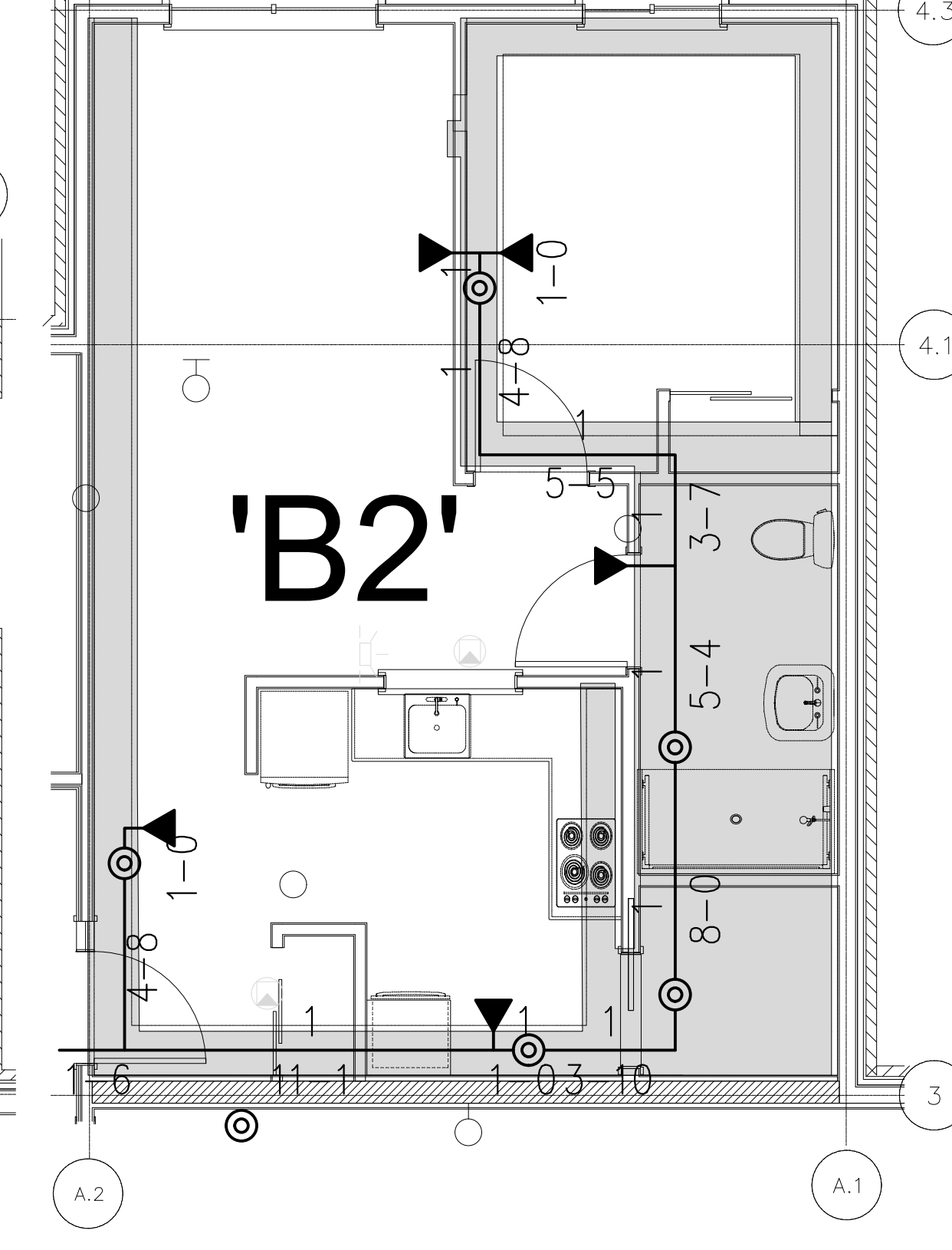
SUITE TYPE 'A6'
SCALE: 1:50



SUITE TYPE 'B'
SCALE: 1:50



SUITE TYPE 'B1'
SCALE: 1:50



SUITE TYPE 'B2'
SCALE: 1:50

DATE	REVISION	DESCRIPTION	BY
07 DEC. 2018	-	ISSUED FOR CONSTRUCTION	D.A.
15 OCT. 2018	1.	REVISE 4" DOMESTIC TO 2"	D.A.
10 JULY 2018	-	REVISE ROOMS 231, 235, 236 & 237	D.A.
04 JULY 2018	-	ISSUED FOR PERMIT & TENDER	D.A.
29 JUNE 2018	-	ISSUED FOR REVIEW & PERMIT	D.A.
14 JUNE 2018	-	ISSUED FOR REVIEW	D.A.

MARK VOID ALL PRINTS DATED PRIOR TO LATEST DATE ABOVE

REVISIONS

CONTRACTOR MUST CHECK AND VERIFY ALL DIMENSIONS AND CONDITIONS ON THE JOB AND REPORT DISCREPANCIES TO THE ENGINEERS BEFORE PROCEEDING WITH THE WORK. THIS DRAWING IS THE PROPERTY OF THE ENGINEERS AND MUST BE RETURNED UPON REQUEST OR AT COMPLETION OF THE WORK. DRAWINGS ARE NOT TO BE SCALED



novus
Fire Protection Consulting Inc.
110 Woodbine Downs Blvd., Unit 4B, Toronto, Ontario M9W 5S6
Tel: 416-746-2590 www.novusfire.com Fax: 416-746-2528

NATALE ARCHITECT INC.

Suite 218
5458 Dundas St. West
Mississauga, Ontario
M9B 6E3

NEW 2 STOREY BUILDING,
SENIORS RESIDENCE

100 McKay Street
CANNINGTON, ONTARIO

PART OF SUITE TYPE PLAN
SPRINKLER LAYOUT

FIRE PROTECTION

DRAWN BY Y.C.	CHECKED BY A.R.	SCALE AS SHOWN
DATE APRIL 2018	PROJECT NUMBER 18-096	DRAWING NUMBER FP4 OF 6